



**PELI**™

DISTRIBUTED BY



**3D CASES LTD**

+44 (0) 1733 269026

[WWW.3D-CASES.CO.UK](http://WWW.3D-CASES.CO.UK)

**PROTECTIVE  
CASES**

# Ultimate Equipment Protection

**WATERTIGHT • DUSTPROOF • CORROSION-PROOF • BUOYANT**



## Easy-Open Latches

Double-step latches facilitate easier opening and closing of the cases.



## O-Ring Watertight Seal

Neoprene o-ring fits snugly between the case body and the lid, ensuring a watertight seal when the case is closed.



1510 Case

## Easy Grip Handles

Ergonomically designed, rubberised handles for improved comfort and grip.



## Stainless Steel Pins

Stainless steel pins are used in hinges, latches and handles to prevent corrosion.

## Quiet Roll Wheels

Peli's transportable cases feature stainless steel, ball bearing wheels for durability and smooth rolling.



1430 Case

## Padlock Protector

Reinforced metal padlock protectors offer security against cutting and theft.



## Automatic Pressure Release Valve

For quick equalization after changes in atmospheric pressure, allows the case to be opened easily (especially after flights).



# Laptop Cases



## 1080 & 1090 Hardback™ Cases

- Designed to protect 13" (1080) and 15" (1090) notepad-style laptops
- Crushproof, splashproof protection
- Inner liner protects laptop from impact, & scratches
- 1090 version includes a shoulder strap



1090 Case



## 1490 Laptop Case

- Attache style case
- Available with foam or no foam
- CC1 Deluxe version - with lid organiser, shock absorbing tray and removable shoulder strap.
- CC2 Standard version (shown left) - with lid organiser, foam in base and removable shoulder strap.

## 1470 Laptop Case

- Attache style case
- Key locking latches
- Available with foam or no foam



## 1495 Laptop Case

- Protects laptops up to 17"
- IP67 rated
- Integral, combination lock
- Available with or without foam
- CC1 Deluxe version (shown left)- inc. lid organiser, nylon padded laptop sleeve and utility pouch, shock absorbing tray & removable shoulder strap
- CC2 Standard version - includes lid organiser, foam in base and a removable shoulder strap



## 1510 Laptop Overnight Case

- Detachable padded laptop sleeve in lid
- Sleeve fits laptops up to 365 x 281 x 43mm
- Separate accessories pouch (can fit in the lid)
- Main compartment has a zipped garment storage unit
- Contained within wheeled 1510 Peli Protector Case
- Case is IP67 rated



Case	Internal Dimensions (mm)					Weight w/foam	Lid organiser option	Panel frame option	Colours
	Length	Width	Total Depth	Depth lid	Depth base				
1080	321	245	30	15	15	1.3kg			● ●
1090	380	288	52	26	26	1.35kg			●
1470	408	278	98	38	60	2.26kg		✓	●
1490	462	298	110	42	68	2.82kg	✓		●
1490CC1	Deluxe case fits laptop 355 x 276 x 63mm						included		●
1490CC2	Standard case fits laptop 432 x 267 x 60mm						included		●
1495	492	342	110	42	68	3.8kg	✓		●
1495CC1	Deluxe case fits laptop 400 x 300 x 55mm						included		●
1495CC2	Standard case fits laptop 470 x 320 x 60mm						included		●
1510LOC	Sleeve fits laptops up to 365 x 281 x 43mm						included		●

# Case Specifications

Internal dimensions shown are the maximum measurement, not taking account of protrusions & draft angles. Draft angles will reduce the length & width dimension depending on the case model.



Case		Internal Dimensions (mm)						
		Base Length A	Base Width B	Base Depth C	Depth (Total)	Lid Length D	Lid Width E	Lid Depth F
1120		188	125	65	76	184	121	11
1150		215	150	76	94	211	147	18
1170		270	156	55	82	271	157	27
1200		241	185	75	105	241	184	30
1300		240	185	125	153	236	183	28
1400		306	234	100	130	306	234	30
1430		360	162	245	295	360	161	50
1440	◆	456	228	358	408	455	228	50
1450		380	266	108	153	375	262	45
1460		471	252	153	278	471	252	125
1500		435	292	110	155	434	291	45
1510	◆	514	288	146	191	515	290	45
1520		455	325	125	170	450	324	45
1550		482	368	150	195	476	363	45
1560	◆	516	390	178	228	517	390	50
1600		556	428	158	204	556	428	46
1610	◆	562	431	216	268	565	433	52
1620	◆	558	430	268	320	562	434	52
1630	◆	730	554	310	392	730	554	82
1640	◆	632	632	304	364	632	630	60
1650	◆	740	460	220	265	740	460	45
1660	◆	740	522	358	446	738	524	88
1690	◆	784	660	312	394	785	660	82
1700	◆	910	352	90	134	905	350	44
1720	◆	1065	344	90	134	1065	344	44
1730	◆	882	628	250	310	882	628	60
1740	◆	1059	345	240	302	1059	345	62
1750	◆	1285	344	90	134	1285	344	44
1770	◆	1398	407	170	216	1398	406	46
1780	◆	1058	558	185	385	1056	558	200
0340	◆	457	460	345	450	456	459	105
0350	◆	507	510	378	498	507	510	120
0370	◆	610	610	480	605	610	610	125
0450	◆	Internal drawer configuration - see separate 0450 brochure for details						
0500	◆	950	532	585	655	950	530	70
0550	◆	1208	611	368	449	1208	611	81

◆ Transportable case with wheels (optional extra on 0350, 0370, 0500 & 0550 cases)

# Case Certification

Peli Cases have undergone strict tests for water and dust ingress protection (IP rating) and for the Air Transport Association (ATA) specification 300.

The Stanag 4280/Defstan 81-41 is a certification recognised by both the UK military and NATO.

Weight W/Foam (kg)	Colours	Divider Set Option	Lid Organiser Option	Panel Frame Option	IP 67	ATA	Stanag/Defstan 81-41	Case
0.56	●●●●●●●●			✓	✓		✓	1120
0.90	●●●●●●●●			✓	✓		✓	1150
0.95	●●●●●●●●				✓			1170
1.30	●●●●●●●●			✓	✓		✓	1200
1.60	●●●●●●●●			✓	✓		✓	1300
2.00	●●●●●●●●			✓	✓	✓	✓	1400
2.95	●●●●●●●●	✓	✓	✓	✓		✓	1430
7.48	●●●●●●●●	✓	✓		✓		✓	1440
2.90	●●●●●●●●	✓		✓	✓		✓	1450
4.85	●●●●●●●●				✓			1460
3.20	●●●●●●●●	✓	✓	✓	✓	✓	✓	1500
6.17	●●●●●●●●	✓	✓		✓		✓	1510
4.24	●●●●●●●●	✓	✓	✓	✓		✓	1520
5.40	●●●●●●●●	✓		✓	✓	✓	✓	1550
9.07	●●●●●●●●	✓	✓		✓		✓	1560
6.40	●●●●●●●●	✓	✓		✓	✓	✓	1600
10.20	●●●●●●●●	✓	✓		✓		✓	1610
11.80	●●●●●●●●	✓	✓		✓		✓	1620
16.33	●●●●●●●●	✓	✓		✓		✓	1630
17.24	●●●●●●●●	✓	✓		✓		✓	1640
16.10	●●●●●●●●	✓	✓		✓	✓	✓	1650
19.10	●●●●●●●●	✓	✓		✓		✓	1660
19.50	●●●●●●●●	✓	✓		✓		✓	1690
7.70	●●●●●●●●				✓		✓	1700
8.60	●●●●●●●●						✓	1720
17.24	●●●●●●●●							1730
12.25	●●●●●●●●							1740
11.60	●●●●●●●●				✓		✓	1750
16.33	●●●●●●●●							1770
22.23	●●●●●●●●						✓	1780
13.50	●●●●●●●●	✓	✓		✓		✓	0340
14.52	●●●●●●●●	✓	✓		✓		✓	0350
18.60	●●●●●●●●	✓	✓		✓		✓	0370
	●●●●●●●●							0450
26.58	●●●●●●●●							0500
43.09	●●●●●●●●							0550

# New Cases

## 0550 Case

Internal Dimensions: 1208L x 611W x 449D mm

- Versatile, mass transit case
- Heavy duty wheeled case when optional casters are used
- Two Integrated Automatic Pressure Equalization Valves
- External Document holder to identify the contents of the case
- Stainless steel hardware and padlock protectors
- Optional pallet riser kit enables handling with a pallet truck or forklift



## 1460 Case

Internal Dimensions: 471L x 252W x 278D mm

- Unique Peli case design
- 50/50 split between base and lid
- Deep lid opens 180° for maximum stability
- Colour: Black

## 1460 EMS Case

- Tough, watertight solution to protect medical kit
- 3-level tray system to organise medical gear
- Tray dividers allow for easy customisation
- Lockable tray section for secure controlled substance storage
- Each tray has an overall internal dimension: 432L x 194W x 34.5D mm
- Nylon shoulder strap included
- Colour: Orange

(Sharps container not included)



# Microcases

**CRUSHPROOF • DUSTPROOF • WEATHERPROOF**

Peli MicroCases are designed to protect small, valuable items such as digital cameras, mobile phones and pagers. Foam inserts are available as an optional accessory.



### Automatic Purge Valve

Peli MicroCases have an automatic purge valve, allowing for quick equalisation after changes in altitude or temperature.



### Hinge Mouldings

MicroCase hinges are moulded into the main unit and secured with stainless steel pins ensuring that the case has no weak points.



### Watertight Seal

MicroCases feature an exclusive watertight seal. No water, sand or dust can penetrate this seal.



### Foam Inserts

Foam is available as an optional accessory for most microcases. It fits perfectly in the base for added protection.



Model	Internal Dim. (mm)			Solid Colours	Clear lid with colour liner
	Length	Width	Depth		
1010	108	69	41	Blue, Red, Yellow	Black, Blue, Red, Yellow
1015	131	67	35	X, X	Black, Blue, Red, Yellow
1020	131	86	41	Blue, Red, Yellow	Black, Blue, Red, Yellow
1030	161	64	49	Blue, Red, Yellow	Black, Blue, Red, Yellow
1040	161	95	44	Blue, Red, Yellow	Black, Blue, Red, Yellow
1050	161	95	67	Blue, Red, Yellow	Black, Blue, Red, Yellow
1060	209	106	54	Blue, Red, Yellow	Black, Blue, Red, Yellow

X - colour not available

## i1010 & i1015 cases

The i1010 case is designed to protect the iPod®, Nano and Shuffle™, while playing via the external headphone jack. This model is the same size as the 1010 and is water resistant.

The i1010 includes a lid organiser to store the earphones while the custom liner doubles as an o-ring seal.

Colours: Black, White, Silver, Pink, Green and Blue to match the iPod® body.



The i1015 allows you to listen to your favourite music while on the beach, mountain biking

or fishing. This model is designed for the iPhone™ & iPod touch® and many smartphones, keeping the contents securely protected against sand and rain.

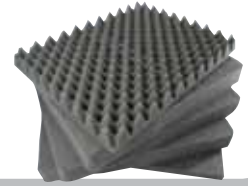
- Built-in cable manager holds earphones and cables
- External headphone jack lets you listen to your player while case is closed
- Carabiner secures i1015 to backpack or belt loop
- Rubber liner doubles as o-ring seal
- Colours: Clear or Black



# Accessories

## Foam sets

Foam sets are available to cut/shape to your own requirements. The case is filled with layers of foam, the number of which depends on the case depth.



## Lid Organisers *(See table overleaf for availability)*

Peli lid organisers feature a multitude of pockets in various sizes to protect and keep gear organised. The lid organiser is attached to the case lid with Velcro® strips or self tapping screws. EMS version (shown below right) for 1500, 1550 & 1600 cases.



## Divider Sets *(See table overleaf for availability)*

A divider system consisting of padded nylon dividers with Velcro® sides, enabling flexible and changeable configuration of internal compartments. EMS Version for medical equipment (shown above right) fits 1500, 1550 and 1600 cases.



## Panel Frame *(See table overleaf for availability)*

A mounting bracket to install electronics or instrumentation panels. An o-ring gasket seals the panel so that the case remains watertight, even with the lid open (panel not included).



## Castors

Optional extra for the 0500 and 0550 cases. The 0350 and 0370 cube cases have removable casters (in a mobility kit) as an accessory.



## Pallet Riser Kit

An optional pallet riser kit for the 0500 & 0550 allows for a forklift truck to move the case without the need for a pallet.



## Peli TSA Lock

A three digit combination TSA approved lock. Works with a TSA pass key enabling access by inspectors (only in USA).

## Nameplates

Ideal to personalise your case - more details available on request.



All Peli cases are covered by the legendary "You break it, we replace it" *lifetime* guarantee.

All contents included in this brochure should be considered as guidelines and only valid at the time of publication.

DISTRIBUTED BY



**3D CASES LTD**

**+44 (0) 1733 269026**

**WWW.3D-CASES.CO.UK**

